

RZ-Series

the last word in economic efficiency.



R 080Z - R 180Z

CHAMPION has been designed to withstand extremely tough conditions.

- oil-free/oil-lubricated
- open/super sound-proofed

Technology is always at its most convincing when there is an optimum ratio between performance data and investment costs. This is exactly the case with the new piston compressors in the RZ-series.

Up-to-date technology!

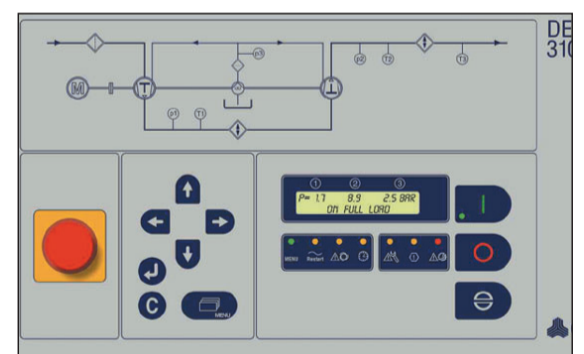
- Every RZ-series has generously dimensioned coolers
- Low compressed air temperatures
- Especially robust design
- No separate components
- System ready for connection

Everything under control!

The RZ-serie compressor is designed for simple operation. It incorporates the very latest microprocessor technology, energy saving transducer control and half load/full load control as standard.

Utmost reliability!

RZ-serie: Simple robust construction reduces service and spare parts costs to a minimum. Let us take responsibility for service with our unique "Compressed Air Without Risk" package.



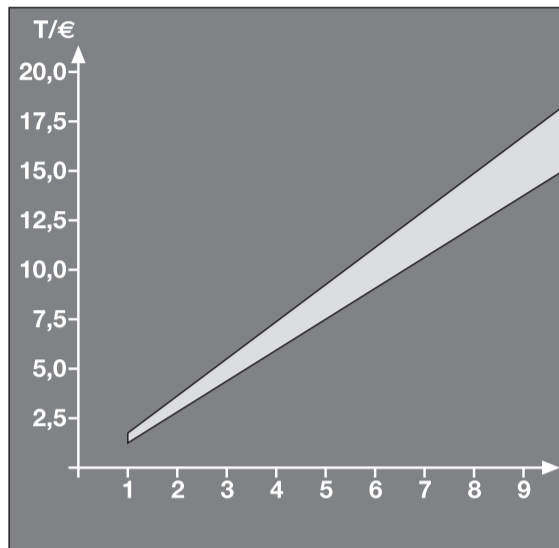
DELCOS 3100-R

- Clear display in text form
- Menu-assisted operation
- Base load change for up to 5 machines
- Switch clock
- Monitored maintenance intervals
- Half load/full load control

An impressive performance throughout!

Whether you base your decision on electrical running cost, service costs or purchase and installation costs, the RZ-serie will provide a convincing argument.

Energy savings (Thousand Euros)



RZ-serie between the energy cost savings with a RZ-serie oilfree system as against other alternative systems: based on the parameters: 10 bar and € 0.10/kwh.

It pays off!

Compared with other oil-free compressor systems, savings of up to €15,000 per year are possible using an oil-free RZ-serie. These savings are a result of outstanding on-load efficiency and a power requirement of only 8% when off-load.

Incredibly flexible!

We also supply the RZ-serie with an optional cooling module. This enables the system to work independently of company cooling water systems.

RZ-serie		080 N/Z 100 N/Z 135 N/Z 180 N/Z				080 T/Z 100 T/Z 135 T/Z 180 T/Z				(DIM)	
Compression		two-stage, double action									
Working overpressure		oil-lubricated				oil-free					
1. Figures	Effective volume flow according to PN2CPTC2 (1m ³ /min = 35,31 cfm)	4	8.10	10.30	13.70	18.70	8.00	10.00	13.30	18.10	:
			36.40	45.96	56.94	83.22	36.97	45.96	57.71	81.03	:
2. Figures	Terminal power according to PN2CPTC2 Motor enclosure IP 23	5	8.00	10.20	13.50	18.60	7.90	9.90	13.20	18.00	:
			39.21	49.55	61.82	88.38	39.78	49.55	62.71	88.38	:
3. Figures	Terminal power according to PN2CPTC2 Motor enclosure IP 55	6	8.00	10.10	13.30	18.40	7.90	9.80	12.90	17.80	:
			42.13	53.03	66.37	94.74	42.70	53.03	67.26	94.74	:
4. Figures	Cooling water consumption (12 - 15 °C temperature inlet Δ t = 25 K)	7	7.90	10.00	13.10	18.20	7.80	9.70	12.80	17.70	:
			44.72	56.29	69.81	100.00	45.28	56.29	70.70	100.00	:
5. Figures	Cooling water consumption (12 - 15 °C temperature inlet Δ t = 25 K)	8	7.90	9.90	13.00	18.00	7.80	9.60	12.70	17.60	m ³ /min
			47.30	59.33	73.47	104.82	47.87	59.33	74.47	104.82	kW
6. Figures	Terminal power according to PN2CPTC2 Motor enclosure IP 23	9	7.80	9.90	12.80	17.80	7.70	9.60	12.50	17.40	kW
			49.33	62.13	76.80	108.78	49.89	62.13	77.80	108.78	l/min
7. Figures	Terminal power according to PN2CPTC2 Motor enclosure IP 55	10	7.80	9.80	12.60	17.60	7.70	9.50	12.40	17.30	:
			47.56	59.53	74.65	107.26	48.10	59.53	75.62	107.26	:
8. Figures	Cooling water consumption (12 - 15 °C temperature inlet Δ t = 25 K)	11	-	-	-	-	7.60	9.40	12.30	17.20	:
			-	-	-	-	53.60	65.82	82.46	115.93	:
9. Figures	Terminal power according to PN2CPTC2 Motor enclosure IP 23	12	-	-	-	-	7.50	9.30	12.10	17.00	:
			-	-	-	-	51.35	63.97	80.15	114.32	:
Speed			1,000	1,000	1,000	1,000	1,000	1,000	1,000	1,000	min ⁻¹
Cylinder diameter			260/160	285/175	350/220	400/250	260/160	285/175	350/220	400/250	mm
Piston stroke			95	95	92	92	95	95	92	92	mm
Pressure/suction pipe DN			80/110		100/150		80/110		100/150		mm
Oil filling		appr..	13	13	18	18	13	13	18	18	l

Dimensions without enclosure

Dimensions	Length	1,662	1,796	1,939	2,021	1,662	1,796	1,939	2,021	mm
(Dimensions for the biggest motor installed IP 23)	Width	1,630	1,630	1,835	1,835	1,630	1,630	1,835	1,835	mm
	Height	1,364	1,364	1,544	1,553	1,364	1,364	1,544	1,553	mm

Dimensions with enclosure

Dimensions	Length	2,766	mm
	Width	2,016	mm
	Height	1,860	mm

Weight

Weight, appr. (IP 23, w. the biggest motor in.)	without enclosure	1,650	1,815	2,480	2,760	1,650	1,815	2,480	2,760	kg
	with enclosure	2,750	2,915	3,580	3,860	2,750	2,915	3,580	3,860	kg

Sound level for models with enclosure

Sound pressure level according to DIN	79	79	83	83	79	79	83	83	dB(A)
45635 free sound field 1 m/NS u. TS	69	69	73	73	69	69	73	73	dB(A)



CompAir Drucklufttechnik GmbH
 Argenthaler Straße 11
 D-55469 Simmern/Hunsrück
 Telephone ++49 (0) 67 61/8 32 - 0
 Facsimile ++49 (0) 67 61/8 32 - 4 09
 E-mail: info@compair.com
 www.compair.de

CompAir GmbH
 Westbahnstraße 5
 A-4490 St. Florian
 Telephone ++43 (0) 72 24/6 76 60
 Facsimile ++43 (0) 72 24/6 76 60 - 1 00
 E-Mail: office@compair.at
 www.compair.at

Aeberhardt AG
 Zürcherstraße 254
 CH-8406 Winterthur
 Telephone ++41 (0) 52/20 80 - 2 00
 Facsimile ++41 (0) 52/20 80 - 2 20
 E-Mail: aeberhardt@compair.com
 www.compair.de

